



Fli-1 Polyclonal Antibody

Catalog No	YP-Ab-01713
Isotype	IgG
Reactivity	Human;Mouse
Applications	WB;IHC;IF;ELISA
Gene Name	FLI1
Protein Name	Friend leukemia integration 1 transcription factor
Immunogen	The antiserum was produced against synthesized peptide derived from human FLI1. AA range:291-340
Specificity	Fli-1 Polyclonal Antibody detects endogenous levels of Fli-1 protein.
Formulation	Liquid in PBS containing 50% glycerol, 0.5% BSA and 0.02% sodium azide.
Source	Polyclonal, Rabbit,IgG
Purification	The antibody was affinity-purified from rabbit antiserum by affinity-chromatography using epitope-specific immunogen.
Dilution	WB: 1/500 - 1/2000. IHC: 1/100 - 1/300. ELISA: 1/10000.. IF 1:50-200
Concentration	1 mg/ml
Purity	≥90%
Storage Stability	-20°C/1 year
Synonyms	FLI1; Friend leukemia integration 1 transcription factor; Proto-oncogene Fli-1; Transcription factor ERGB
Observed Band	50kD
Cell Pathway	Nucleus .
Tissue Specificity	Blood,Bone marrow,Lymph,Placenta,
Function	disease:A chromosomal aberration involving FLI1 is a cause of Ewing sarcoma [MIM:133450]. Translocation t(11;22)(q24;q12) with EWS.,function:Sequence-specific transcriptional activator. Recognizes the DNA sequence 5'-C[CA]GGAAGT-3'.miscellaneous:Located on a fragment of chromosome 11 flanked on the centromeric side by the acute lymphoblastic leukemia-associated t(4;11)(q21;q23) translocation breakpoint and on the telomeric side by the Ewing- and neuroepithelioma-associated t(11;22) (q24;q12) breakpoint.,similarity:Belongs to the ETS family.,similarity:Contains 1 ETS DNA-binding domain.,similarity:Contains 1 PNT (pointed) domain.,subunit:Can form homodimers or heterodimers with ETV6/TEL1.,
Background	This gene encodes a transcription factor containing an ETS DNA-binding domain. The gene can undergo a t(11;22)(q24;q12) translocation with the Ewing sarcoma gene on chromosome 22, which results in a fusion gene that is present in the majority of Ewing sarcoma cases. An acute lymphoblastic



leukemia-associated t(4;11)(q21;q23) translocation involving this gene has also been identified. Alternative splicing results in multiple transcript variants. [provided by RefSeq, Aug 2012],

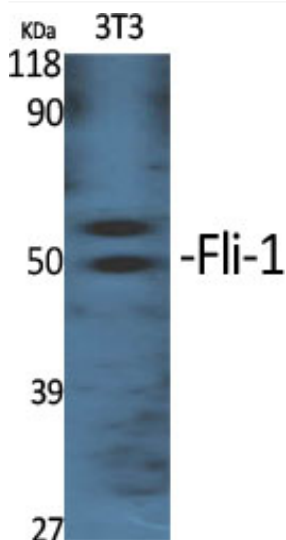
matters needing attention

Avoid repeated freezing and thawing!

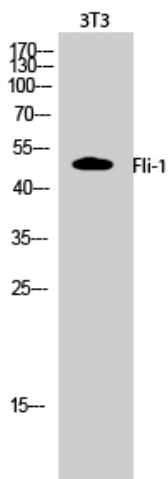
Usage suggestions

This product can be used in immunological reaction related experiments. For more information, please consult technical personnel.

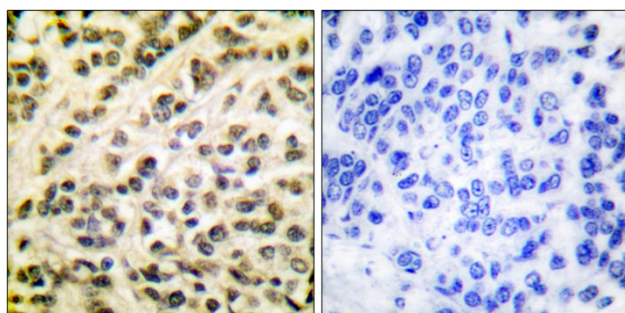
Products Images



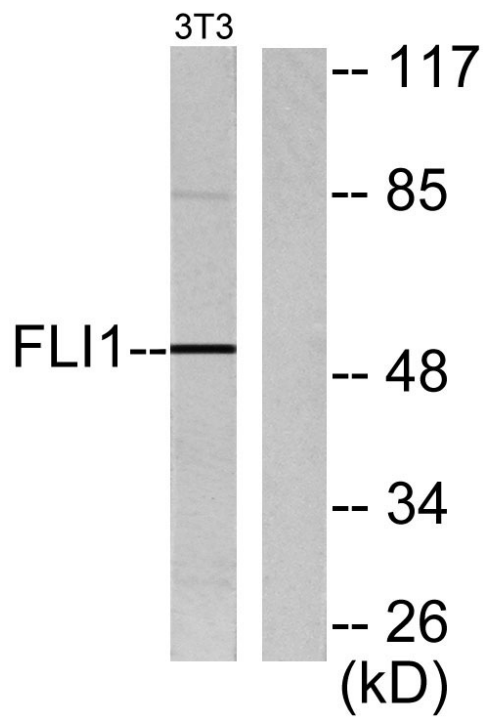
Western Blot analysis of various cells using Fli-1 Polyclonal Antibody cells nucleus extracted by Minute TM Cytoplasmic and Nuclear Fractionation kit (SC-003, Inventbiotech, MN, USA).



Western Blot analysis of 3T3 cells using Fli-1 Polyclonal Antibody cells nucleus extracted by Minute TM Cytoplasmic and Nuclear Fractionation kit (SC-003, Inventbiotech, MN, USA).



Immunohistochemistry analysis of paraffin-embedded human breast carcinoma tissue, using Fli-1 Antibody. The picture on the right is blocked with the synthesized peptide.



Western blot analysis of lysates from NIH/3T3 cells, using FLI1 Antibody. The lane on the right is blocked with the synthesized peptide.